



# RM of Beaver River No. 622

Providing ratepayers with  
current and correct information  
pertaining to the RM

December 2025

159 Main Street, Pierceland  
Box 129, Pierceland, SK S0M 2K0

306-839-2060  
[www.rmofbeaverriver622.ca](http://www.rmofbeaverriver622.ca)

## RM Office Holiday Hours

The RM of Beaver River office will be CLOSED  
December 24, 2025 at noon until January 4, 2026.

If you are planning on coming to the office to remit your payment please do so prior to  
our holiday hours.

We will reopen January 5th, 2026 from 8:00 a.m. until 4:00 p.m.  
(closed from 12 p.m. to 1 p.m.).

Cheques can be submitted before the holidays and post-dated to December 31, 2025.

All payments postmarked or electronically submitted after December 31, 2025 will be  
subject to penalty.

## RM Transfer Sites Holiday Hours

December 24 - Pierceland Transfer Site open 10 am to 4 pm

December 25 - All sites closed

December 26 - All sites closed

December 27 - Pierceland Transfer Site open 10 am to 4 pm

December 28 - Goodsoil Transfer Site open 10 am to 4 pm

December 31 - All sites closed

January 1 - All sites closed

## Letters to Santa

For more than 40 years, Canada postal elves have been busy helping Santa sort through over one million letters per year from around the world!

Interested in writing to Santa?

Send your letter to Santa no later than December 8, 2025. We cannot guarantee delivery dates, but Santa does respond to all letters he receives.

Ensure your letter is addressed to Santa (address below).

No stamps are required to mail a letter to Santa within Canada.

Include your return address and drop the letter in any Canada Post mailbox or post office.

Please mail all letters from one family in the same envelope.

Santa's address:  
Santa Claus  
North Pole  
H0H 0H0  
Canada



## Snowploughing

The Snowploughing of Private Drives and Lanes Policy was amended via Council resolution #227-24 at the September 19th, 2024 meeting.

The changes include:

- Flag fee price increased to **\$100.00 per flag** (per service).
- **Bus routes, primary municipal roads and secondary municipal roads are priority. Driveways may be ploughed only AFTER the aforementioned is complete, as time permits.** Furthermore, the property owner acknowledges that on occasion, due to unforeseen circumstances, that their laneway may not be ploughed by the Municipality and that they may be required to make alternative arrangements to have the laneways ploughed.



Phone: 306-839-2060  
Fax: 306-839-2178  
Email: rm622@sasktel.net



[www.rmofbeaverriver622.ca](http://www.rmofbeaverriver622.ca)

159 Main Street  
Box 129  
Pierceland, SK  
S0M 2K0

November 18, 2025

## PUBLIC NOTICE

### RE: MUNICIPAL ROAD ALLOWANCE CLOSURE

This is formal notification that it is the intention of Council to consider the passing of a bylaw with respect to the closing of the following road Allowance as per Section 13(1)(b)(ii) of the Municipalities Act:

All that portion of original road allowance ORA 60-62-21-W3 shown in the dashed line on the attached drawing

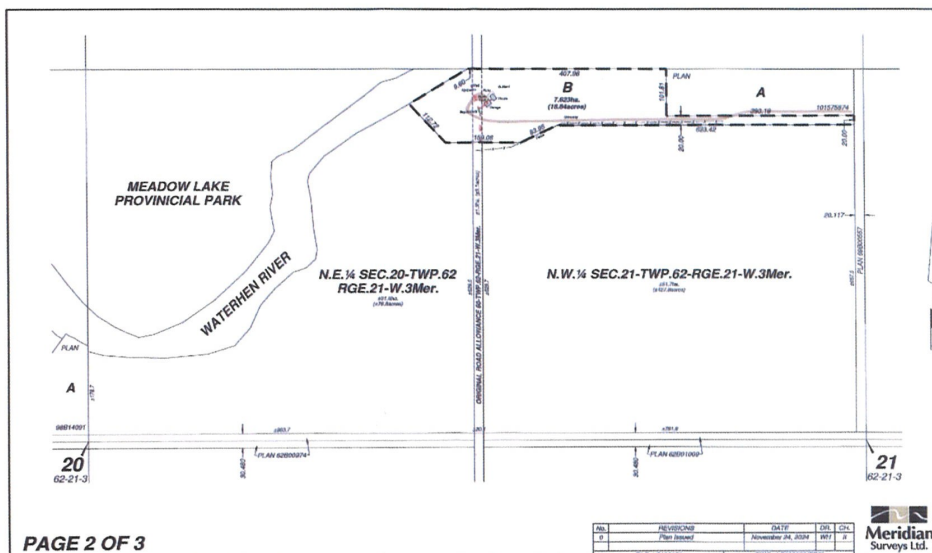
Per Section 128(1) of *The Municipalities Act*, notice is hereby given that Council has the intention to consider permanently closing a municipal road allowance pursuant to Section 13 of *The Municipalities Act*.

Any person claiming to be affected prejudicially by the proposed bylaw can contact the municipal office to have correspondence read aloud OR attend (in-person) the next Regular Council Meeting at 10:00 AM, December 16, 2025, at the RM of Beaver River Council Chambers - 159 Main Street, Pierceland.

Please contact the RM office if you have any questions or concerns.

Thank you

Debbie Johnson  
Administrator  
RM Beaver River No. 622





## *The Tradition Continues*

24 hours a day, 365 days a year, in defense of North America, NORAD tracks everything that flies in and around Canada and the United States.

Homeland Defense is our #1 Priority.

On Dec. 24, NORAD has the very special mission of also tracking Santa.

NORAD Tracks Santa has grown tremendously over the years. Today through satellite systems, high-powered radar and jet fighters, NORAD Canadians and Americans track Santa Claus on his journey.

Millions of people around the world track Santa with NORAD via our website, social media, mobile apps and calls to our NTS Operations Center on Dec. 24.

The NORAD Tracks Santa website offers family-friendly games, videos and information about Santa and NORAD. People who have an OnStar subscription can ask the operator to locate Santa. Amazon Alexa users are able to request Santa's location on the NORAD Tracks Santa skill. Santa Trackers can also use Bing to learn of Santa's whereabouts.

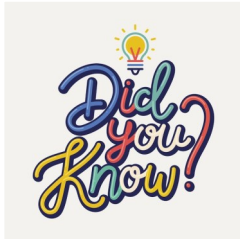
All of this is made possible by the amazing generosity of our volunteers and our government and corporate partners who help bring the NORAD Tracks Santa program to the world for free.

We are honored that NORAD Tracks Santa has become a part of so many families' holiday traditions.

On Dec. 24, trackers worldwide can:

- \* Call 1-877-HI-NORAD
- \* Go to the website: **[www.noradsanta.org](http://www.noradsanta.org)**
- \* Download the NORAD Tracks Santa app on **Google Play** or NORAD Tracks Santa Claus on the **Apple App Store**
- \* Social media sites: Facebook, Instagram and X

**Regular RM Office Hours: Monday to Friday 8 am to 12 pm and 1 pm to 4 pm**



## Winter Birds

Our area has foraging birds, such as chickadees, blue jays, woodpeckers, and nuthatches that stay in the winter months. They know that food will be scarce over the snowy months, so they spend months in advance putting a portion of their daily harvest in various hiding spots so that no other birds will take their food.

Human maintained bird feeders are a welcome self-serve restaurant for our birds. They help the birds to meet their daily food needs without having to use up their secret pantries. Their secret stashes of food will last longer for when the weather is harsh.

Birds of prey, such as owls, hawks, and raptors, hunt their prey when they can but once the weather turns cold they can store some food for use throughout the winter.

Birds stay warm in winter by fluffing their feathers to trap air for insulation, and by seeking shelter in cavities or by huddling together. They also use shivering to generate heat, sometimes enter a state of torpor to lower their metabolism and conserve energy, and store food or consume high-energy foods like seeds and suet to maintain their internal temperature.

Chickadees are Canada's most common feeder species.

So fill up those feeders, black oil sunflower seeds and suet work great, and enjoy our winter birds!



### REEVE AND COUNCIL CONTACT NUMBERS

**Reeve:** Kevin Turchyn (C) 306-839-4425

**Division 1:** Matthew Wiatr (C) 306-819-0440

**Division 2:** Brian Sawatzky (H) 306-839-2072

**Division 3:** Dwayne Degenhardt (C) 780-812-8701

**Division 4:** Ken Hammett (C) 780-903-8666

**Division 5:** Lorne Wyss (H) 306-839-2038

(C) 306-839-7766

**Division 6:** Wayne Rewega (H) 306-839-2073

(C) 306-839-7886

**Administrator:** Debbie Johnson 306-839-2060

**RM Office:** RM622@sasktel.net 306-839-2060

**Lac des Iles Utilities Office:** 306-839-2066

# Merry Christmas

Property taxes are  
due December 31,  
2025



### Regular Council Meeting

**December 16, 2025  
8:30 am**

**at the RM of Beaver River  
Office in Pierceland**





*Merry Christmas and a very Happy New Year from  
the Reeve, Council and Staff of the  
RM of Beaver River!*