



RM of Beaver River

No. 622

Providing ratepayers with
current and correct information
pertaining to the RM

April 2025

159 Main Street, Pierceland
Box 129, Pierceland, SK S0M 2K0

306-839-2060
www.rmofbeaverriver622.ca

Recreational Property Maintenance Tender Lac Des Iles Washrooms and Fish Filleting Shacks (Weekends/Holidays ONLY)

This tender is to supply the following maintenance services for the RM of Beaver River No. 622 every Saturday, Sunday and all statutory holidays (Friday and Monday holidays only) for the period commencing on May 16, 2025 to September 1, 2025 inclusive:

1. RM West Boat Launch (NE 12-63-23-W3) / RM East Boat Launch (SE 17-63-22-W3):
 - a. Washrooms
 - must be cleaned and bleached daily
 - empty and remove garbage daily (haul to RM waste collection site)
 - refill paper products as required
 - cleaning products and paper products will be supplied by RM
 - monitor septic tank daily and notify RM when pump out is necessary
 - b. Fish Filleting Shack
 - must be cleaned and bleached daily
 - cleaning supplies will be supplied by the RM
 - empty and remove garbage daily (haul to RM waste collection site)
 - remove and haul away fish offal daily to RM waste collection site
 - remove garbage or anything that is not fish offal before disposing in designated area.
 - monitor septic tank daily and notify RM when pump out is necessary
 - c. Miscellaneous
 - RM will be responsible for the winterizing of plumbing and buildings, etc.
 - report any required repairs and potential hazards to the RM office
2. The Shores MR1 Park:
 - a. Washrooms
 - must be cleaned and bleached daily
 - empty and remove garbage daily (haul to RM waste collection site)
 - refill paper products as required
 - cleaning products and paper products will be supplied by RM
 - monitor septic tank daily and notify RM when pump out is necessary
 - b. Miscellaneous
 - RM will be responsible for the winterizing of plumbing and buildings, etc.
 - report any required repairs and potential hazards to the RM office

For complete tender details please see www.rmofbeaverriver622.ca under Ads-Jobs/Tenders

Tender closing date: **April 14, 2025 4:00 pm CST**

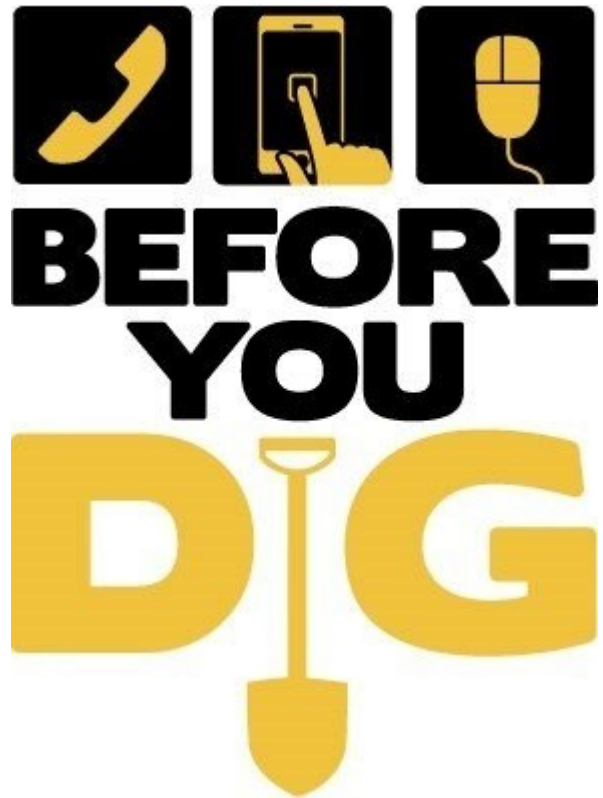
Call Before You Dig

Sask 1st Call

Monday through Friday (except holidays) -
Emergency requests are available 24/7 by calling
1-866-828-4888.

For assistance with online requests, call
1-866-828-4888 during regular operating hours.

Sask 1st Call is a service for anyone planning to dig or excavate. The service provides underground facility screening and notification for safe excavation. The Sask 1st Call team is dedicated to the prevention of unnecessary damage, injury or death due to unsafe digging practices. We look forward to serving you for your own safety, and that of our communities.



Pest Control

Pest Control Officer Jim Hinger will be starting yearly visits after the May Long Weekend. If you require Jim's services before he stops at your house please call Jim directly at 780-370-0737 or the RM office at 306-839-2060.



**The RM of Beaver River office will
be closed**

Good Friday April 18, 2025

and

Easter Monday April 21, 2025

to celebrate the Easter Holiday



Attention Saskatchewan Municipal Hail Members

March 31st, 2025 is the last day to withdraw from SMHI coverage.

Please be advised that the crop exemption deadline is fast approaching. If you do not require coverage on all crops, a crop exemption application must be filed on or before **April 30th, 2025** to be effective for the 2025 season. For more information please contact Debbie Johnson at the RM office 306-839-2060.



Additional Municipal Hail Insurance

Saskatchewan weather can be unpredictable.

Be prepared for hail.

Do you have cash rented land you would like to insure?

- ◆ Premiums payable via credit card or cheque
- ◆ Losses greater than 85% are paid @ 100%
- ◆ Fire insurance included

Last day to apply for coverage is **August 1st, 2025**.

Call Nicole Neufeld 306-240-6985 for all your additional hail insurance needs.



www.rmofbeaverriver622.ca

We have added a new feature to our website that allows you to subscribe to automatically receive an emailed copy of our Monthly Newsletter.

If you hover over the NEWSLETTERS tab on the main page of the website a Subscribe button will pop up. Click on the button and enter your first and last name and your email address. You will then be added to the email list and be automatically sent each Monthly Newsletter. You may unsubscribe at any time.

We hope you enjoy this new feature!

Don't Prune Elms from April 1 to August 31

The annual ban on pruning elm trees in Saskatchewan begins April 1 and runs until August 31. The ban is in place to help stop the spread of Dutch elm disease (DED).



Burn Permits

Burn permits are required **April 1st to October 31st** and are available by phone from the Municipal Office with NO FEE.

Please see www.rmofbeaverriver622.ca for complete Burn Permit Policy 200-01

An updated copy of the current zoning bylaw has been posted on our website under the Policies & Bylaws tab.

Consolidated Zoning Bylaw No. 57 (March 2025)




Free Crisis Support for Canadian Farmers

National Farmer Crisis Line


24/7, Confidential Help When You Need It Most


Farming doesn't come with days off—it's a job that requires everything you've got. When stress piles up and the weight feels too heavy, you don't have to carry it alone. The National Farmer Crisis Line (1-866-FARMS01) offers free, immediate, and ag-informed crisis support for farmers, farm families, and agricultural workers across Canada.

- **ELIGIBILITY:** Canadian farmers, farm families (relatives of farmers - living on or off farm), farm employees (staff who are employed on farms), and spouses and dependents of all farm employees.
- **PRIVACY:** All information received through counselling sessions is confidential and in accordance with the Personal Health Information Protection Act (2004).
- **COST:** It's free! no fees, no limits, just support when you need it.
- **ACCESSIBILITY:** Operated by TELUS Health, you can call 1-866-327-6701, 24 hours a day, 7 days a week, 365 days a year. Available in both English and French.

 **Call 1-866-FARMS01 anytime — 24/7, 365 days a year.**

Pierceland Minor Ball Registration is now open for the 2025 season! Should you have any questions please email piercelandminorball@hotmail.com You can find more information on our Facebook Page Pierceland Pirates as well!

Open to all age groups in softball  and baseball  as well as our learn to play program!

Get registered today 



 **SCAN ME**

PIC•COLLAGE

Public Notice – Road Closure

Rural Municipality of Beaver River No. 622

Intention of Council to consider a report to pass a bylaw with respect to the closing and selling of a portion of roadway H28545 (Plan 101894104), Thunderchild 818.51.2 and H28545 in the following land – NE and NW 7-59-25-W3, NE and NW 11-59-26-W3, NE and NW 10-59-26-W3, SE and SW 15-59-26-W3 and SE 16-59-26-W3 (Map as noted below)

Per Section 128(1) of *The Municipalities Act*, notice is hereby given that Council has the intention to consider permanently closing a municipal road pursuant to Section 13 of *The Municipalities Act*.

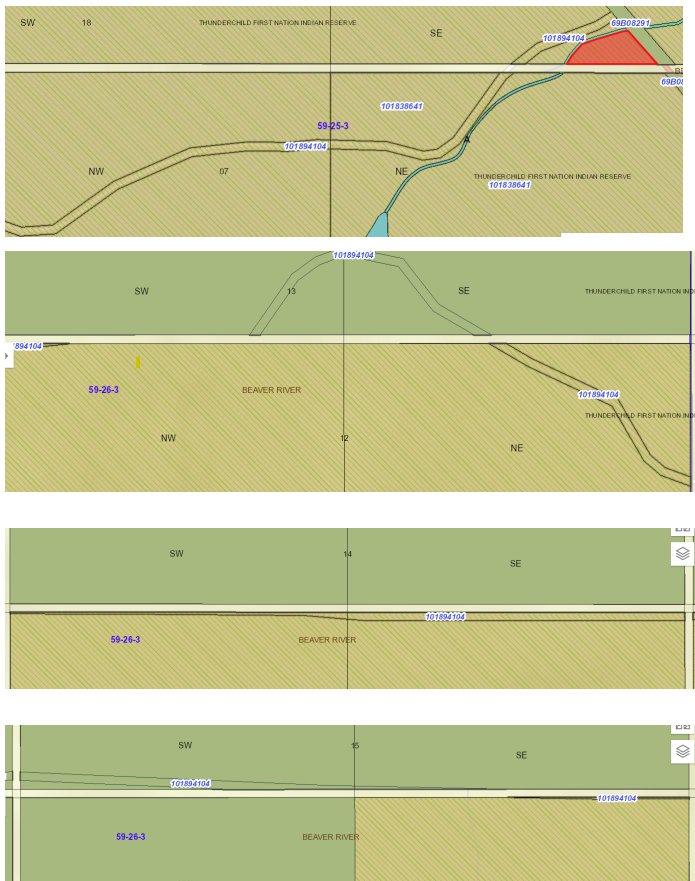
Any person claiming to be affected prejudicially by the proposed bylaw or that person's agent can be heard at the next Regular Council Meeting at 11:30 AM, Tuesday May 20th, 2025, in Council Chambers at the RM of Beaver River No. 622 office located at 159 Main Street, Pierceland, SK

Dated this 20th day of March, 2025

Debbie Johnson

Administrator

R.M. Beaver River No. 622



Regular RM Office Hours: Monday to Friday 8 am to 12 pm and 1 pm to 4 pm



The Trans-Canada Highway Is The World's Second Longest Highway

In second place to Highway 1 in Australia as the World's longest highway, the Trans-Canada Highway spans an impressive 4 860 miles. The route crosses ten of Canada's provinces from Victoria to Labrador.

Building this highway was not an easy feat, especially in high snowfall and avalanche regions like British Columbia. While planning the cross-country route began in 1949; the Trans-Canada Highway was officially opened in 1962 but only completed in 1971.

Eighty-Five Percent of the World's Maple Syrup Comes From Canada

Canada's climate offers the ideal conditions for the production of maple tree sap, which is used to make maple syrup. Maple trees store starch in order to survive the harsh winter temperatures. The starch is converted into sugar which is found in high concentrations in maple sap.

Between the end of winter and early spring, the sap is harvested by drilling into the tree's trunk and boiled to create maple syrup. Canada produces around 20 million gallons of maple syrup every year.



REEVE AND COUNCIL CONTACT NUMBERS

- Reeve:** Kevin Turchyn (C) 306-839-4425

- Division 1:** Matthew Wiatr (C) 306-819-0440
- Division 2:** Brian Sawatzky (H) 306-839-2072
- Division 3:** Dwayne Degenhardt (C) 780-812-8701
- Division 4:** Ken Hammett (C) 780-903-8666
- Division 5:** Lorne Wyss (H) 306-839-2038
(C) 306-839-7766
- Division 6:** Wayne Rewega (H) 306-839-2073
(C) 306-839-7886

- Administrator:** Debbie Johnson 306-839-2060
- RM Office:** RM622@sasktel.net 306-839-2060
- Lac des Iles Utilities Office:** 306-839-2066



Regular Council Meeting
April 15, 2025 8:30 am
at the RM of Beaver River
Office in Pierceland

Snow Melt

With the coming snow melt, any help to identify flooding of roads in your area would be greatly appreciated.

Please report flooded roads to your local councillor or the RM office at **306-839-2060.**