

Bylaw No. 04-08

Rural Municipality of Beaver River No. 622

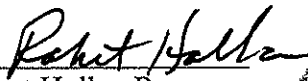
A bylaw to amend Bylaw No. 58 known as the Basic Planning Statement.

The Council of the R.M. of Beaver River No. 622, in the Province of Saskatchewan, enacts to amend Bylaw No. 58 as follows:

1. The Land Use Concept Map referred to in Part VIII of the Basic Planning Statement is amended by:


Redesignating from A-Agriculture Development Policy Area to Lakeshore Development Policy Area, all that land within the bold dashed line on the attached plan of proposed subdivision prepared by Michael L. Waschuk, Saskatchewan Land Surveyor, dated May 1, 2007 which forms part of this Bylaw.

2. This Bylaw shall come into force and take effect when approved by the Minister.



Robert Holba, Reeve

(SEAL)




Paulette Wolkowski, Administrator

Certified a true copy of Bylaw 04-08
Passed by Council on March 19, 2008 A.D.


Paulette Wolkowski, Administrator



PLAN OF PROPOSED SUBDIVISION
 SHOWING SUBDIVISION OF PART OF
 SW ¼ SEC. 8 - 63 - 22 - W.3rd.M.
 (Surface Parcel #131280511)
 RM of BEAVER RIVER, No. 622
 SASKATCHEWAN

PRELIMINARY PLAN COMPLETED
 ON JULY 21st, A.D. 2006,
 BY: Michael J. Woodhull, S.L.S.

LEGEND:

PORTION TO BE SEVERED IS BOUNDED BY A
 HEAVY DASHED LINE, AND CONTAINS 3.43 HECTARES
 MORE OR LESS.

MEASUREMENTS ARE IN METRES AND DECIMALS
 OF A METRE.

SCALE: 1:5,000
 SASKATCHEWAN MUNICIPAL GOVERNMENT,
 PLANNING APPROVAL:

Prepared by:

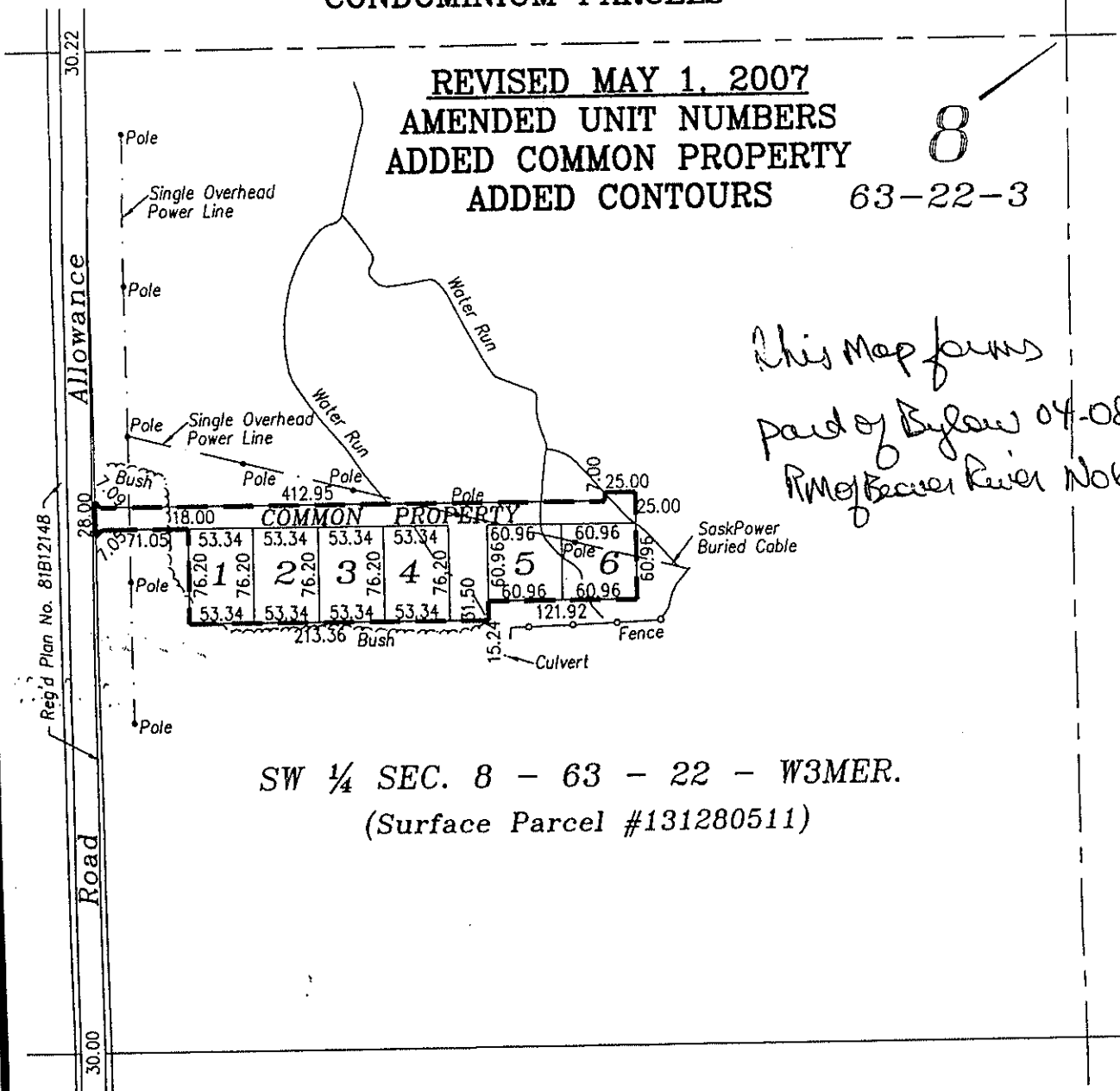
TRI-CITY SURVEYS LTD.
 P.O. BOX 548,
 NORTH BATTLEFORD, SASK.
 S9A 2Y7 OUR FILE: W06255
 DRAWN BY: T. PAPUGA
 PH: 445-8148 FAX: 445-1545

OWNERS APPROVAL:

ALVIN HETLINGER

SHIRLEY HETLINGER

REVISED MARCH 16, 2007
THESE ARE BARE LAND
CONDOMINIUM PARCELS



SW ¼ SEC. 8 - 63 - 22 - W3MER.
 (Surface Parcel #131280511)