



RM of Beaver River No. 622

Providing ratepayers with
current and correct information
pertaining to the RM

September 2020

www.rmofbeaverriver622.ca 159 Main Street, Pierceland 306-839-2060

Lease Land Flooding



Do you have lease land that has been affected by recent flooding?

How to Make a Rental Reduction Request on Agricultural Crown Land:

The Rental Reduction Request Form can be completed by any agricultural Crown land lessee who has experienced uninsurable losses on their leased land due to an uncontrollable natural event (i.e. flooding, fire). The lessee is required to complete the form by declaring that the losses were ineligible for insurance coverage. The form must be submitted by October 1. Once a completed form is received, it will be reviewed by a Land Management Specialist who will work with the lessee to verify the request which may include a land inspection or the development of a restoration plan. For additional information, please contact your regional office.

Lands Branch, Ministry of Agriculture
A131-1192 102nd Street
North Battleford, SK S9A 1E9
Bus: 306-446-8742, Fax 306-446-7447

Rental Reduction Request Form available at:

<https://publications.saskatchewan.ca/api/v1/products/107235/formats/120150/download>

The link to the form is also available on our website: www.rmofbeaverriver622.ca

North West Municipalities Association Scholarship

The North West Municipalities Association (NWMA) is offering two (2) five hundred dollar scholarships during 2020 and annually there after.

The program offers graduating grade 12 students, and mature students, living within and/or working in the area covered by the NWMA, the opportunity to capture a \$500 scholarship to help fund their post-secondary education which would make the individual eligible to apply to the Rural Municipalities Association, Rural Board of Examiners, for a certificate of qualification in Local Government Authority.

For more information and the application form please go to our website:

www.rmofbeaverriver622.ca

Did You Know?

Fall is caused by the Earth's tilt, not our distance from the sun. When the northern hemisphere tilts towards the sun, we get warmer. When it tilts away, we get colder. Fall and spring are the times of transition.

PIERCELAND RECREATION ASSOCIATION RAFFLE

\$50/TICKET

50 - FREE STANDING 24FT PANELS

RETAIL VALUE \$16, 737.00

Draw to be made October 5th, 2020



Tickets Available:
Wayne Rewega
Calvin Gelowitz
Kim McRae
Pierceland Agencies
C King Performance

GOODSOIL GROWING PHOTO CONTEST!

Goodsoil Growing's 2nd Annual Photo Contest!

1. Photos must be taken in the Goodsoil area, RM of Beaver River or Meadow Lake Park. Photos from all seasons and older photos are encouraged!
2. Indicate the photo location, photographer and the date taken.
3. The Goodsoil Growing committee will be looking for photos that best portray the natural beauty of the area, e.g. activities, scenery, events.
3. Photos may be electronically submitted to: ruthdorn@live.ca or placed on Goodsoil Growing Facebook page.
4. Winning photos will be selected by the Goodsoil Growing committee and used in a community calendar (on sale October 2020) or main street banners to be mounted in 2021. In the photo, the selection process; photographer names were, and will be, kept anonymous.



Photo Submitted by Taylor Labrocca

Winners of the 2019 Calendar Photo Submission Contest are:

Glenda Getzinger, Carol Hofer, Jerry Spence,
Elaine Sperle, Laura Kennedy, Carol Roth,
Mark Greschner, Nicole Wild, Stephanie
Wagmann, Melanie Hankey.

Winners of the 2019 Banner Photo Submission Contest are:

Betty Engelbrecht, Miranda Piecharka, Jerry Spence,
Jodi Rodgers, Colleen Symes, Mark Weber, Nicole



Photo Submitted by Holly Huppertz

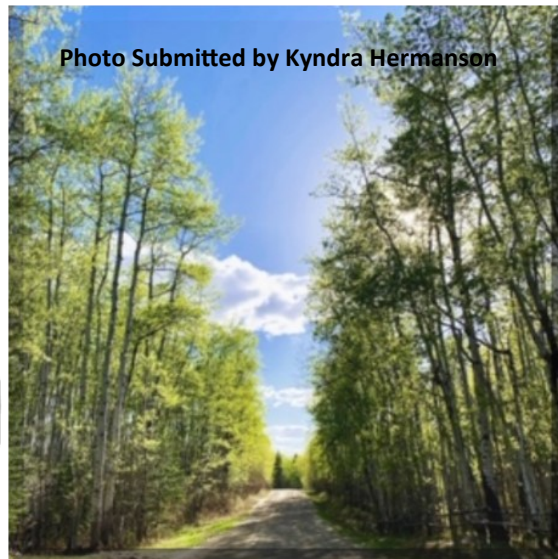


Photo Submitted by Kyndra Hermanson

Goodsoil Growing Committee:

Leslie Dixon (President) - H: 306-238-4859
Melanie Hankey (Vice-President) - C: 306-238-7772
Laura Kennedy (Secretary-Treasurer) - C: 306-381-4097
Marie Klassen—C: 780-686-4402
Sharon Arndt— C: 306-227-4745
Ruth Dornstauber—C: 306-830-2726

Thank you to all of you who submitted photos; they were all amazing! It was a difficult process to pick out the photos to use. Please keep submitting!



LOCAL GOVERNMENT ELECTION, 2015

L-30.11 REG 1

Appendix C

FORM H
[Section 66 of the Act]

**Notice of Call for Nominations
(Municipal Elections)**

PUBLIC NOTICE is hereby given that nominations of candidates for the office(s) of:

Reeve: Rural Municipality of Beaver River No. 622

Councillor: Rural Municipality of Beaver River No. 622

Division No. 1, 3, 5

will be received by the undersigned on the 7th day of October, 2020, from 8:00 a.m. to 4:00 p.m. at the Rural Municipality of Beaver River No. 622, 159 Main Street, Pierceland, Saskatchewan, and during regular business hours on September 14th to October 7th 2020, at the Rural Municipality of Beaver River No. 622, 159 Main Street, Pierceland, Saskatchewan.

Nomination forms may be obtained at the following location(s):

-The Rural Municipality of Beaver River No. 622 Office, 159 Main Street, Pierceland, Saskatchewan.

-www.rmofbeaverriver622.ca

Dated this 14th day of September, 2020.

Nicole Neufeld
Returning Officer



Mail-in Ballot Voting System

Are you unable to attend the November 9, 2020 General Election for the RM of Beaver River? Great News! We now offer more options for mail-in ballot registration. If you are unable to register for a ballot in person, a voter's registration form and mail-in ballot declaration can be filled in and witnessed by any of the following:

- ♦ the returning officer (at the municipal office);
- ♦ the deputy returning officer (at the municipal office);

NEW

- ♦ an enumerator;
- ♦ a notary public;
- ♦ a commissioner for oaths;
- ♦ any other person authorized to sign oaths; or
- ♦ a lawyer.

****Please ensure you present picture identification to the witness****

Forms can be accessed on www.rmofbeaverriver622.ca

Forward your completed forms to the municipal office by mail, fax or email.

November 9, 2020 Election is for the positions of Reeve, Councillors in Divisions 1, 3, and 5.

Regular RM Office Hours: Monday to Friday 8 am to 12 pm and 1 pm to 4 pm



**The Goodsoil Transfer site is
back to regular hours**

Sunday and Tuesday 10:00 a.m. – 4:00 p.m.

Pierceland Transfer Site Hours:

Wed and Sat 10:00 a.m. – 4:00 p.m.

**Northwest Regional Waste Management Authority
Landfill, Rapid View, SK:**

Monday to Saturday 9:00 a.m. - 4:45 p.m.

Provincial Clubroot Survey 2020

Colleen Fennig, PAg will be in our area in September, weather permitting doing the Provincial Clubroot Survey for 2020.

She will be driving a green Subaru SUV with "SARM Division 6 Plant Health Officer" magnets on the doors.



**REEVE AND
COUNCIL CONTACT
NUMBERS**

Reeve: Kevin Turchyn (C) 306-839-4425

Division 1: Vacant

Division 2: Brent Bender (C) 306-238-7755

Division 3: Dwayne Degenhardt (H) 306-238-4427

(C) 780-812-8701

Division 4: Les Kruchkowski (C) 306-821-7047

Division 5: Lorne Wyss (H) 306-839-2038

(C) 306-839-7766

Division 6: Wayne Rewega (H) 306-839-2073

(C) 306-839-7886

Administrator: Nicole Neufeld 306-839-2060

RM Office: 306-839-2060

Lac des Iles Utilities Office: 306-839-2066



**The RM of Beaver River
office will be closed Monday,
September 7, 2020 to
observe Labour Day**



**Next RM Council meeting
September 16, 2020**

8:30 am