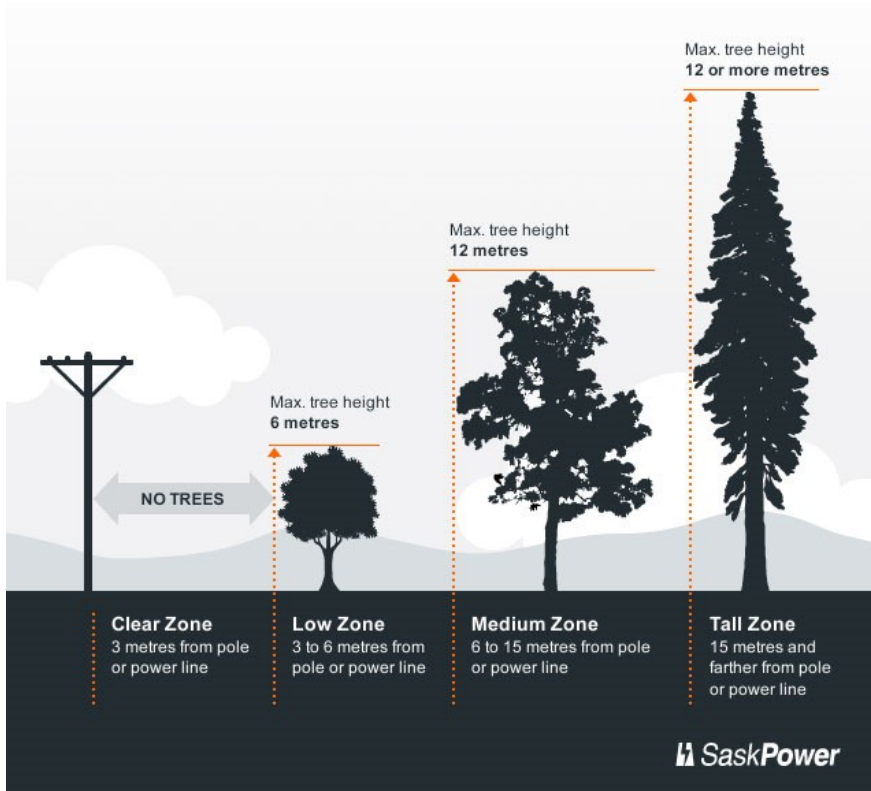


In Saskatchewan, trees cause approximately 2,000 power outages a year when they come in contact with power lines.



Prevent future outages by planting in the right place.

← SaskPower have identified four zones when planting around power lines.

No matter which zone you're planting in, be sure that the tree and its branches will not reach into the Clear Zone when fully grown. A minimum of three metres (approximately 10 feet) clearance should be left between a power line and any branches.

What to Plant

If you're looking for information on what to plant:

Your local nursery can provide advice on choosing the right tree for the right space.

You can download the [Plant the Right Tree in the Right Place Program Brochure](#) (on the SaskPower website) that explains the four zones and suggests tree types.

Planting Around SaskPower Equipment

Thinking of planting trees or shrubs near SaskPower ground-mounted pedestals? Remember that SaskPower employees must always be able to open these pedestals for emergency and maintenance work. Leave two to three metres on all sides free of trees and shrubs.



Lakeland Library Region

Your Community.
Your Library.

Lakeland Library Region has been busy these past few weeks. Throughout the month of July 2020, we have recalled staff, provided training and opened many library branches with contactless curbside pickup service.

Our front doors are currently not open to the public but staff are in the buildings preparing and/or already offering curbside pick-up services. Many of the return boxes have also been opened at those locations that have return boxes.

All returned materials are placed in a 72 hour quarantine before being checked in. Items will appear as checked out on your account for some time after they have been returned. There will be no late fees charged until further notice.

For your information, the following is a list of branches that have started (or soon will) with contactless curbside pickup:

Starting during the week of July 6-11

- North Battleford Library
- Meadow Lake Library
- Battleford Library
- Neilburg Library
- Lloydminster Library

Starting during the week of July 13-18:

- Maidstone Library
- Cut Knife Library
- Loon Lake Library
- Makwa Library
- Paradise Hill Library
- St. Walburg Library
- Rabbit Lake Library
- Mayfair Library

Starting during the week of July 20 -25:

- Edam Library (July 20)
- Speers Library (July 20)
- Turtleford Library (July 20)
- Borden Library (July 21)
- Glaslyn Library (July 21)
- Hafford Library (July 21)
- Marsden (July 21)
- Maymont Library (July 21)
- Meota Library (July 21)
- Radisson Library (July 21)
- **Goodsoil Library (July 22)**
- **Pierceland Library (July 22)**
- Denzil (July 24)
- Lashburn Library (tentatively the week of July 20)
- Marshall Library (tentatively the week of July 20)
- Paynton Library (tentatively the week of July 20)
- Medstead Library (tentatively the week of July 20)

Did You Know?

Some Highlights of

The All Terrain Vehicles Act

An ATV - which includes quads, dirt bikes and off-road utility vehicles - is a vehicle designed for off-road use only.

To operate an ATV in any public areas, a person must be at least 16 years old, and hold a valid driver's license. Those who are between the ages of 12 and 15 can operate an ATV in public areas if they are supervised by someone who has a valid driver's license, or who has passed an approved ATV training course. A child under the age of 12 cannot operate an ATV in public areas.

An ATV has restrictions on where it can be operated. They can be operated on Crown land or highway right-of-ways, such as ditches. ATVs cannot be operated on any street, road or highway, or for crossing a bridge, unless it is authorized by permission of the land owner. It is illegal to operate an ATV while impaired by drugs or alcohol, even when doing so on private land. Also, driving in a manner that is dangerous to the public is illegal. These are criminal offences that can result in criminal charges, seizure of the ATV and the loss of a driver's license.

If you are found on public land by police, you must provide proof of insurance. Every rider **MUST** wear an approved helmet and appropriate protective riding gear. Every person who authorizes or permits another person to operate an ATV in contravention of any provision of this Act or the regulations; or without complying with any provision of this Act or the regulations is guilty of an offence against this Act.

You may wish to view the Saskatchewan ATV Act further at:

<https://publications.saskatchewan.ca/#/products/369>

From the Act: Penalty (32) A person who is guilty of an offence against this Act is liable on summary conviction to a fine of not more than \$1000 and in default of payment to imprisonment for a term of not more than 30 days. 1988-89, c.A-18.02, s.32.



NORTHWEST REGIONAL WASTE AUTHORITY INC.

RAPID VIEW LANDFILL SITE

HOURS OF OPERATION:

MONDAY TO SATURDAY 9:00AM - 4:45PM (CLOSED ALL STAT HOLIDAYS)

WHAT IS PERMITTED
Unsorted Waste: Household or Commercial (all household garbage must be bagged)
Metal – including but not limited to wire, propane bottles, washers, dryers and stoves
Wood – painted, stained or treated, plywood, OSB
Bagged and unbagged grass
Wood – unpainted, unstained or untreated, branches and trees (accepted at no charge)
Refrigerators, freezers, air conditioners, water coolers
Mattresses or box springs
Cement
Tires - *must be removed from rim
Grain Bags - *bags must be tightly rolled and secured. There is no charge for this service.

WHAT IS NOT PERMITTED
Oil pails or jugs
Oil
Batteries
Paint
Animal carcass
Oil filters
Hydraulic hoses
Asbestos
Contaminated soil
Pesticides or herbicides (and containers)
Microwaves
T.V.'s
Stereo Equipment
Any other electronics
Large loads of recyclable materials

Methods of payment: Cash, Cheque, or Debit

Please note:

There is no salvaging of any items allowed!

Surcharges will be applied for unsorted waste loads and loads containing non permitted items.
Please deposit items in the appropriate areas.

Contacts:

Landfill Site: (306)236-4315

Site Manager: Shkopich Enviro – (306)236-5200

NRWMA Administrator: (306)819-0866

Disposal of waste at the Northwest Regional Waste facility is subject to Ministry regulations for operating a waste disposal ground.



Mail-in Ballot Voting System

Are you unable to attend the November 9, 2020 General Election for the RM of Beaver River? Great News! We now offer more options for mail-in ballot registration. If you are unable to register for a ballot in person, a voter's registration form and mail-in ballot declaration can be filled in and witnessed by any of the following:

- ♦ the returning officer (at the municipal office);
- ♦ the deputy returning officer (at the municipal office);

NEW

- ♦ an enumerator;
- ♦ a notary public;
- ♦ a commissioner for oaths;
- ♦ any other person authorized to sign oaths; or
- ♦ a lawyer.

****Please ensure you present picture identification to the witness****

Forms can be accessed on www.rmofbeaverriver622.ca

Forward your completed forms to the municipal office by mail, fax or email.

November 9, 2020 Election is for the positions of Reeve, Councillors in Divisions 1, 3, and 5.

Regular RM Office Hours: Monday to Friday 8 am to 12 pm and 1 pm to 4 pm



The Goodsoil Transfer site is now open for summer hours

Sunday and Tuesday 10:00 a.m. – 4:00 p.m.

Thursdays in July and August 10:00 a.m. – 4:00 p.m.

Pierceland Transfer Site Hours:

Wed and Sat 10:00 a.m. – 4:00 p.m.

**Northwest Regional Waste Management Authority
Landfill, Rapid View, SK:**

Monday to Saturday 9:00 a.m. - 4:45 p.m.

Lease Land Flooding



Do you have lease land that has been affected by recent flooding? If so, please call the Saskatchewan Lands Branch at 306-446-7449 to discuss the possibility of lease fee cancellation.



**REEVE AND
COUNCIL CONTACT
NUMBERS**

Reeve: Kevin Turchyn	(C) 306-839-4425
Division 1: Jason Vongrad	(C) 306-304-1973
Division 2: Brent Bender	(C) 306-238-7755
Division 3: Dwayne Degenhardt	(H) 306-238-4427 (C) 780-812-8701
Division 4: Les Kruchkowski	(C) 306-821-7047
Division 5: Lorne Wyss	(H) 306-839-2038 (C) 306-839-7766
Division 6: Wayne Rewega	(H) 306-839-2073 (C) 306-839-7886
Administrator: Nicole Neufeld	306-839-2060
RM Office:	306-839-2060
Lac des Iles Utilities Office:	306-839-2066



**The RM of Beaver River
office will be closed Monday,
September 7, 2020 to
observe Labour Day**



2020 Annual Ratepayers Meeting has been postponed until further notice. If you have any questions or concerns please call the office.



**Next RM Council meeting
August 20, 2020**

8:30 am