

## Bylaw No. 02-09

### Rural Municipality of Beaver River No. 622

A bylaw to amend Bylaw No. 58 known as the Basic Planning Statement.

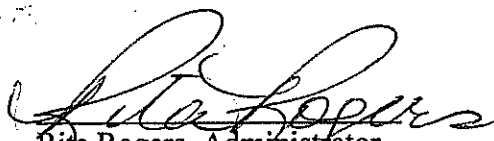
The Council of the R.M. of Beaver River No. 622, in the Province of Saskatchewan, enacts to amend Bylaw No. 58 as follows:

1. The Land Use Concept Map referred to in Part VIII of the Basic Planning Statement is amended by:

Redesignating from A-Agriculture Development Policy Area to Lakeshore Development Policy Area all that land within the shaded area on the attached diagram, which forms part of this Bylaw.

2. This Bylaw shall come into force and take effect when approved by the Minister.

  
Murray Rausch, Reeve

  
Rija Rogers, Administrator



PLAN OF PROPOSED SUBDIVISION  
 SHOWING SUBDIVISION OF PART OF  
 SW ¼ SEC. 16 - 63 - 22 - 3  
 (SURFACE PARCEL #150075222)  
 RM of BEAVER RIVER, No. 622, SASK.

PRELIMINARY PLAN COMPLETED  
 ON SEPTEMBER 25th, A.D. 2008,

BY: Michael J. Wankel, S.L.S.

LEGEND:

PORTION TO BE SEVERED IS BOUNDED BY A  
 HEAVY DASHED LINE, AND CONTAINS 27.71 HECTARES  
 MORE OR LESS.

MEASUREMENTS ARE IN METRES AND DECIMALS  
 OF A METRE.

SCALE: 1:5,000

DEPARTMENT OF GOVERNMENT RELATIONS  
 COMMUNITY PLANNING BRANCH:

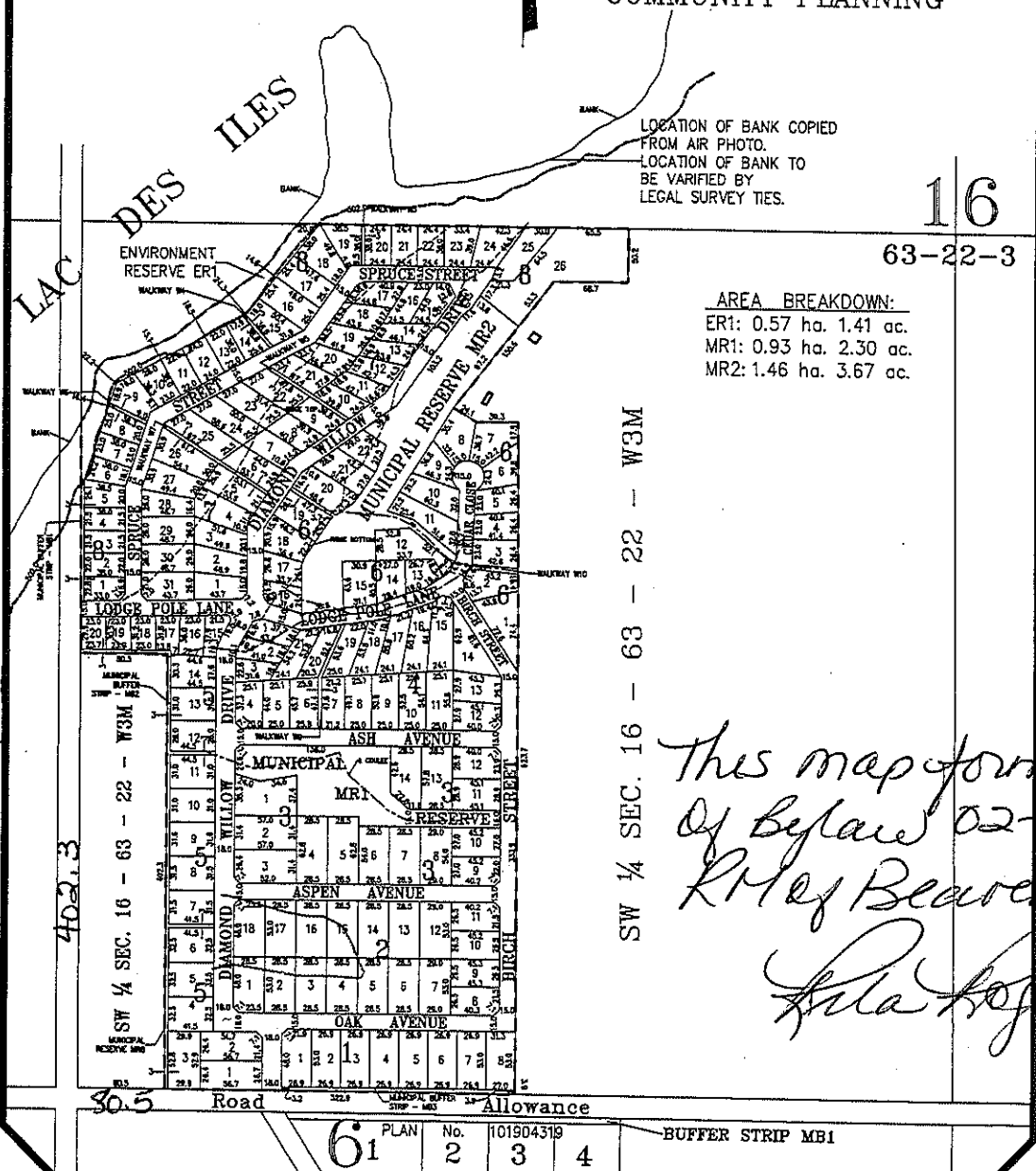
Prepared by:

TRI-CITY SURVEYS LTD.  
 P.O. BOX 548,  
 NORTH BATTLEFORD, SASK.  
 S9A 2Y7 OUR FILE: W06268  
 DRAWN BY: B. Gristwood  
 PH: 445-8148 FAX: 445-1545

OWNERS APPROVAL:

OWNER \_\_\_\_\_

REVISED: JAN. 23, 2009  
 AS PER LETTER FROM  
 COMMUNITY PLANNING



AREA BREAKDOWN:  
 ER1: 0.57 ha. 1.41 ac.  
 MR1: 0.93 ha. 2.30 ac.  
 MR2: 1.46 ha. 3.67 ac.

SW ¼ SEC. 16 - 63 - 22 - W3M

*This map forms part  
 of Bylaw 02-09  
 RM of Beaver River 622  
 Lila Kopas, RMA*

61	PLAN No.	101904319	4
2	3	4	

BUFFER STRIP MB1