

PLAN OF PROPOSED SUBDIVISION

OF ALL OF

PARCEL D, REG'D PLAN No. 88B07551

WITHIN

N.W.¼ SEC.7-TWP.63-RGE.22-W.3Mer.

R.M. OF BEAVER RIVER No. 622

2015

SCALE 1:1000

NOTE

PORTION TO BE SURVEYED IS OUTLINED IN A HEAVY DASHED LINE, AND CONTAINS **2.046ha.(5.05acres)**

MEASUREMENTS ARE IN METRES AND DECIMALS THEREOF.

DISTANCES ARE APPROXIMATE AND MAY VARY BY ± 1 METRE.

STANDARD ROAD ALLOWANCE SHOWN ARE 20.117m IN WIDTH.


MERIDIAN SURVEYS LTD. MAKES NO GUARANTEE AS TO THE EXACT LOCATION OF THE

UNDERGROUND FACILITIES SHOWN. THE LOCATION OF UNDERGROUND FACILITIES MUST

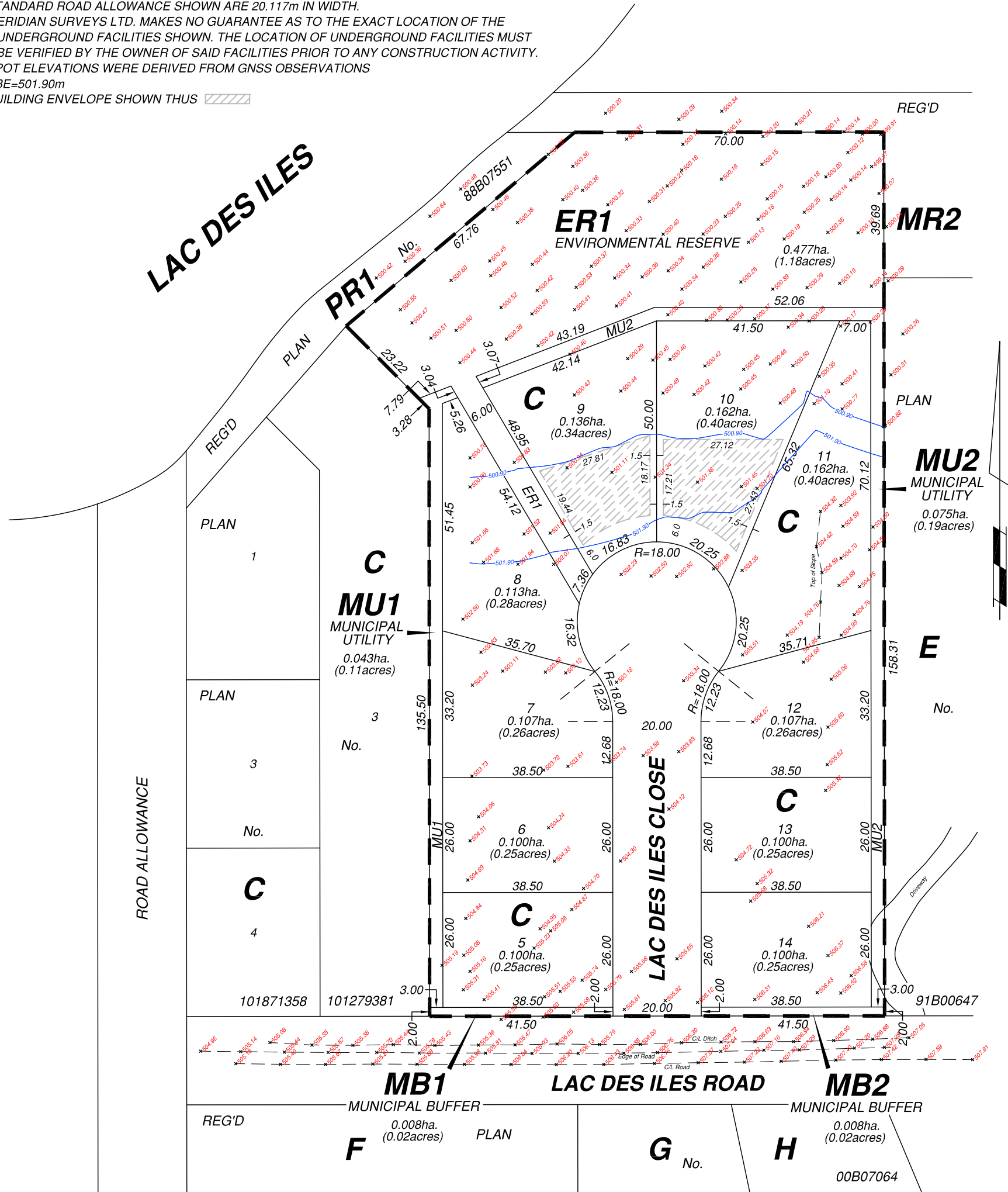
BE VERIFIED BY THE OWNER OF SAID FACILITIES PRIOR TO ANY CONSTRUCTION ACTIVITY.


SPOT ELEVATIONS WERE DERIVED FROM GNSS OBSERVATIONS

SBE=501.90m

BUILDING ENVELOPE SHOWN THUS 

Ministry of Government Relations
Community Planning Branch
Approval




Ian C. Isackson
Saskatchewan Land Surveyor

Susan Hinger
Approval: Owner PARCEL D, REG'D PLAN No. 88B07551

Reynold Hinger

November 29, 2017
September 15, 2017
May 18, 2017
DWG.FILE: LS150484(PPS)


Meridian
Surveys (Alta.) Ltd.